

A.05



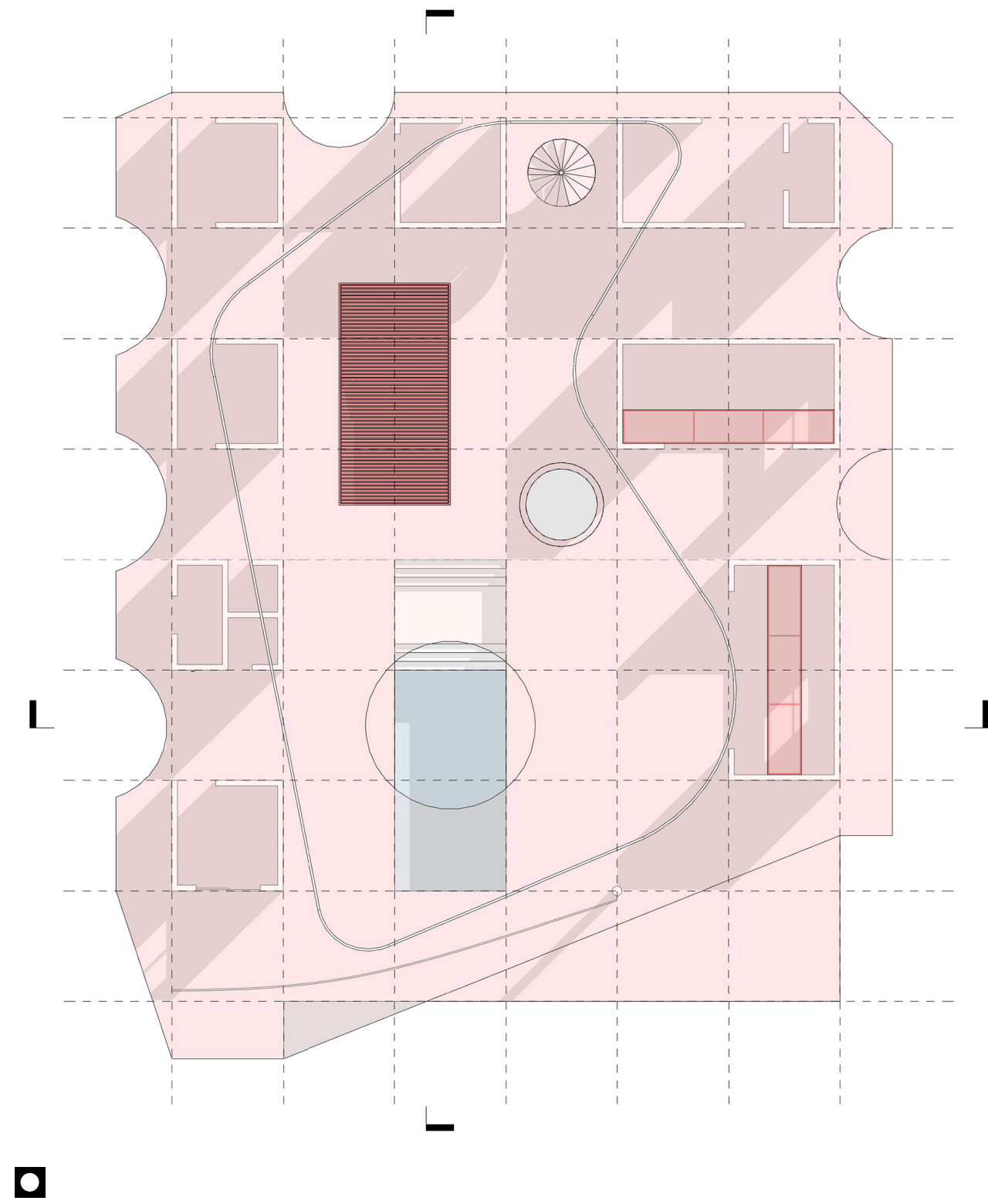
■ Digital Image



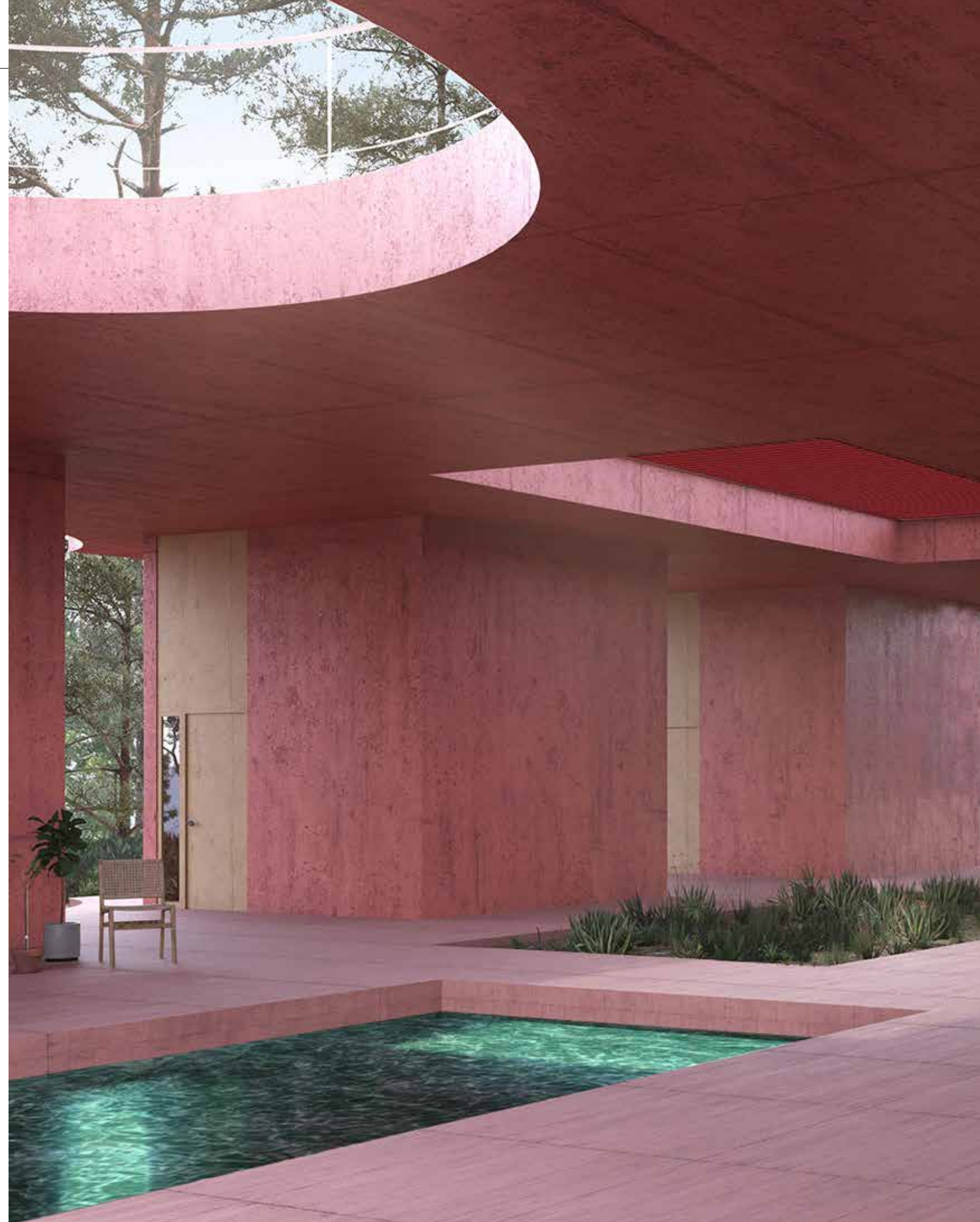
■ Site Photograph

Title	Junglist Brutalism
Program	Residential
Status	Design Development
Location	Lombok, Indonesia
Size	12,700 sqf

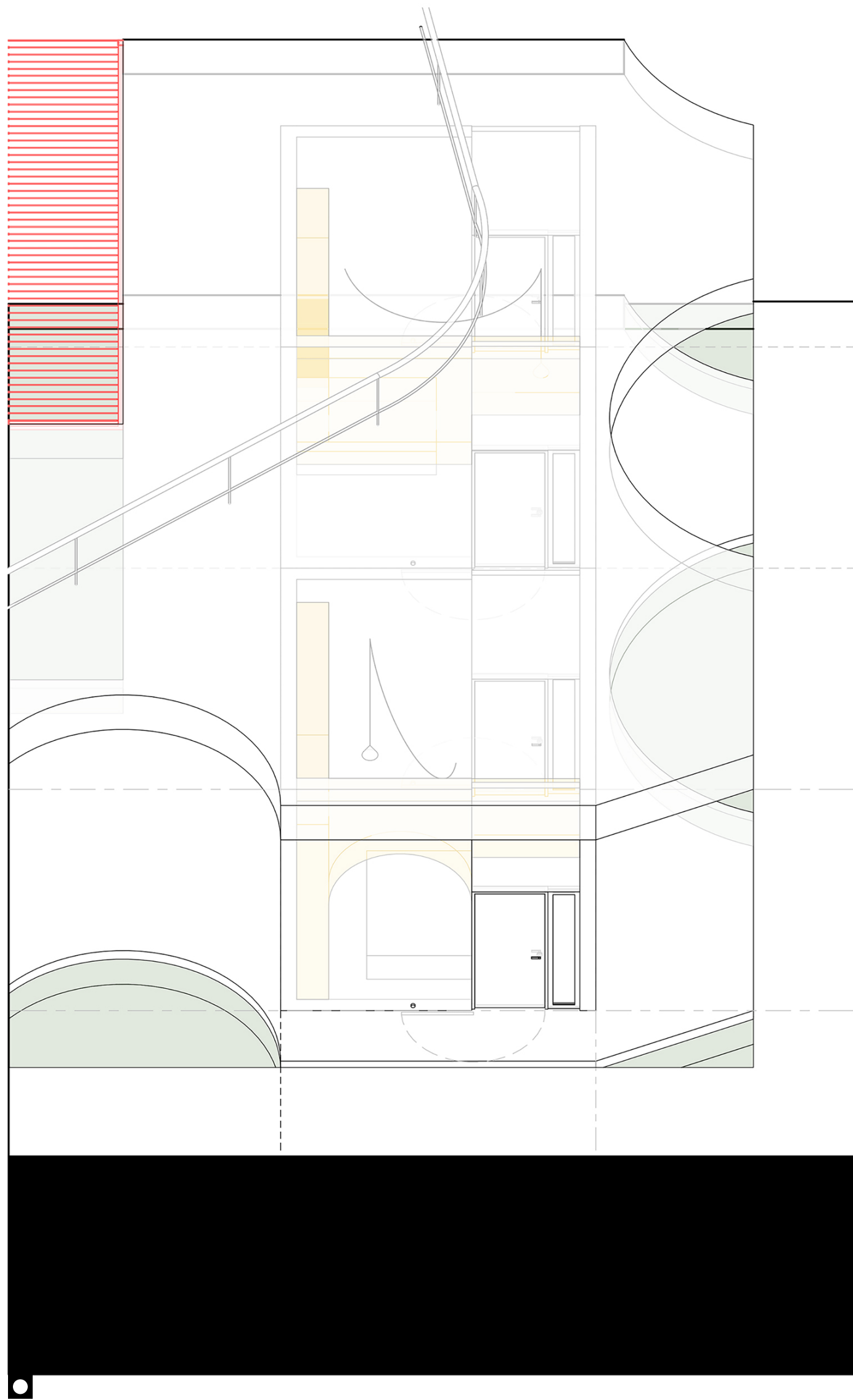
A.05



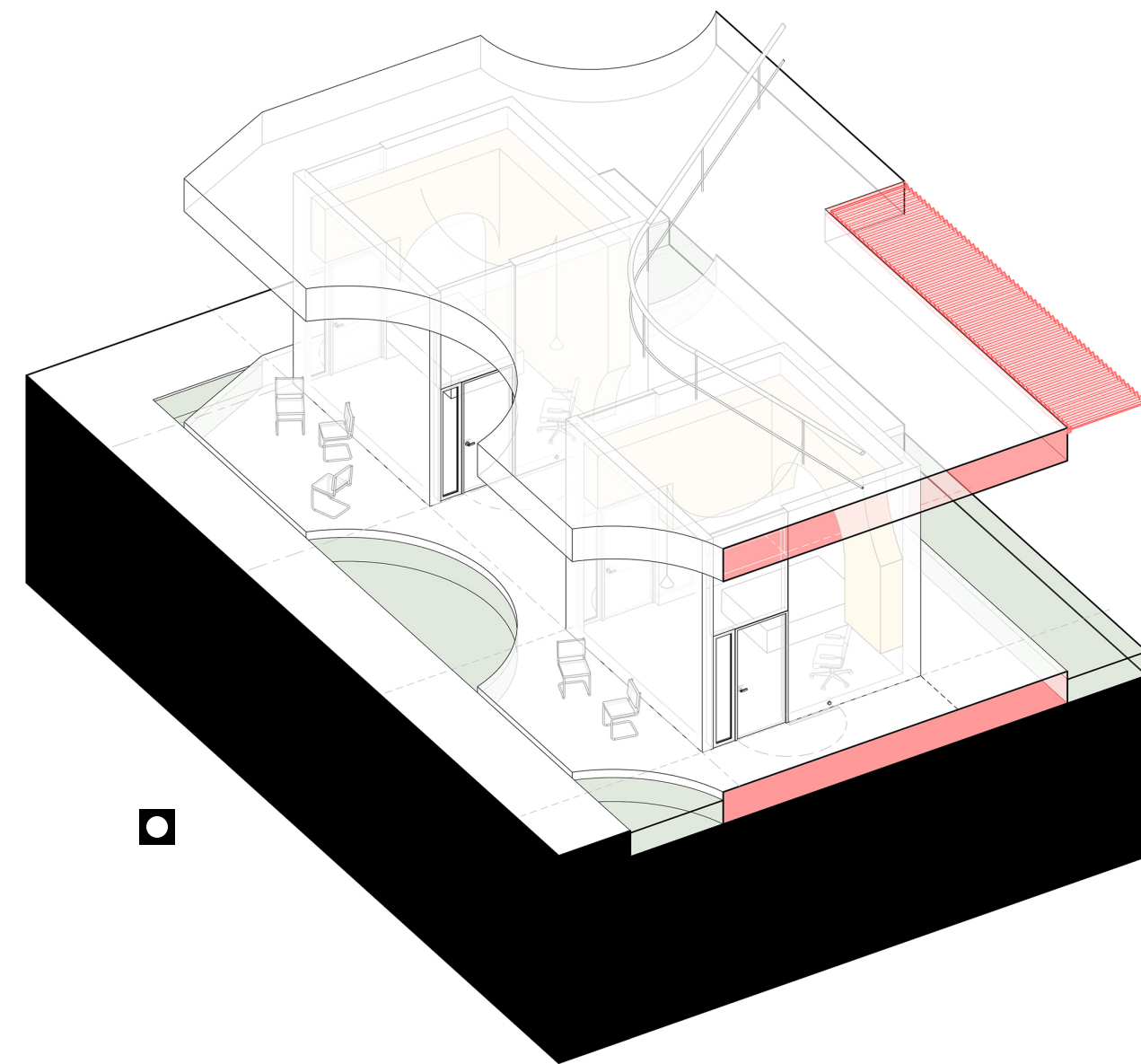
▲ *A brutalist ruin in the jungle. A clash of a static, monolithic architecture and the flux of nature. Through scale and form the massing of this project separates itself from contemporary notions of residence. This aesthetic relationship of architecture and nature is applied to a plan that is organized on a 4m x 4m grid. This project compresses the private portions of the plan to 4m cubes at the edges of the plan. Shared space and circulation are combined to create large open expanses that blend back into nature at the edge of the grid. Portions of the edge of the grid are either capped by program volumes or planters that shield the semi-interior space from the surrounding forest. This project is intended to be retreat architecture, often accommodating social retreats, meant to be 'discovered'. The architecture serves as a monolithic platform to support and expand upon the inhabitants experience of the surrounding nature. As this is a remote site, the material palette is selected to limited trades required on site. As a result the majority of the architecture is a single pigmented tinted concrete. Door openings are filled in with light wood door and wall elements and the cubes that house private program elements are completed with singular wood millwork elements fabricated on site.*



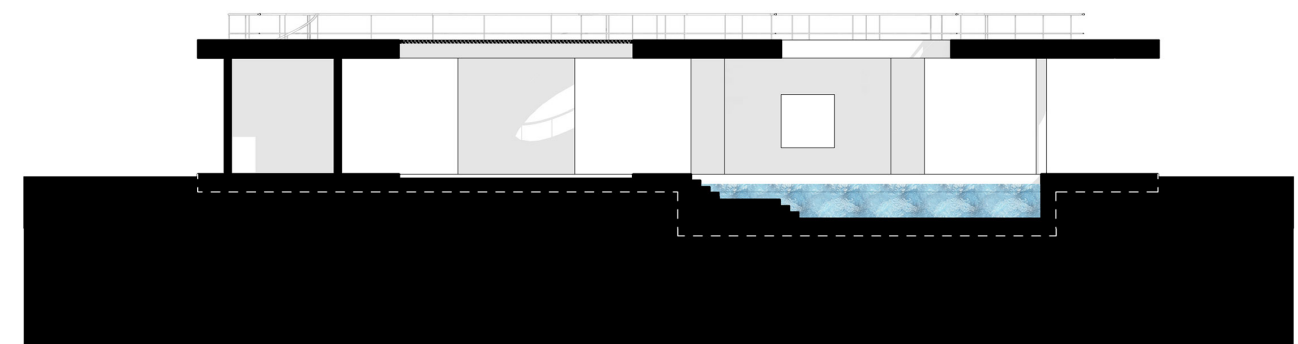
A.05



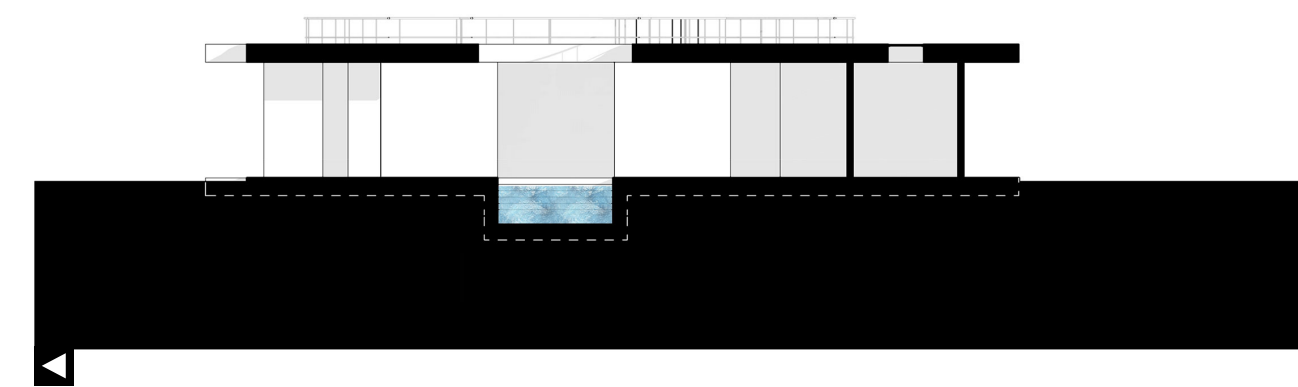
■ *Oblique Axo of 2 Bedrooms*



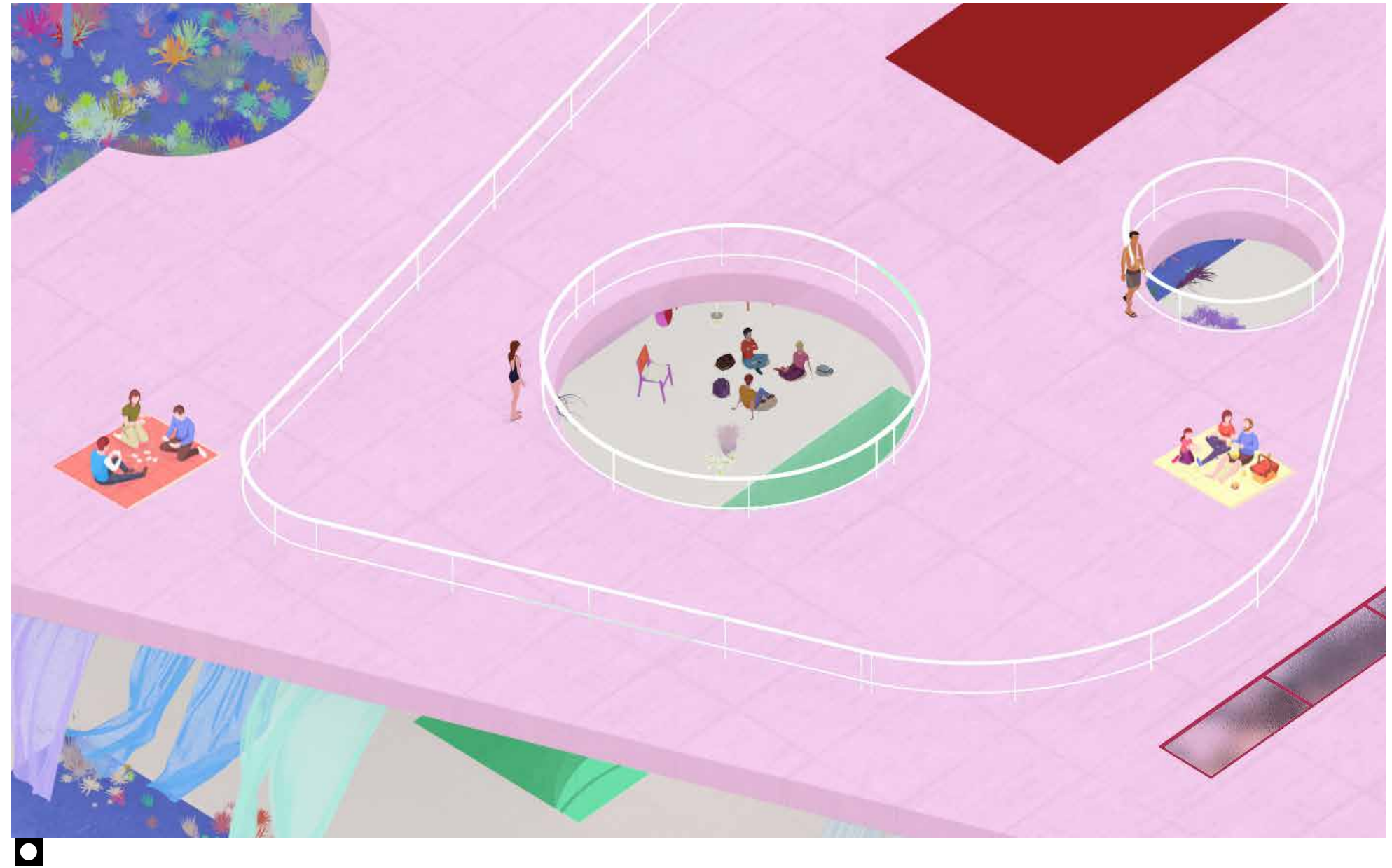
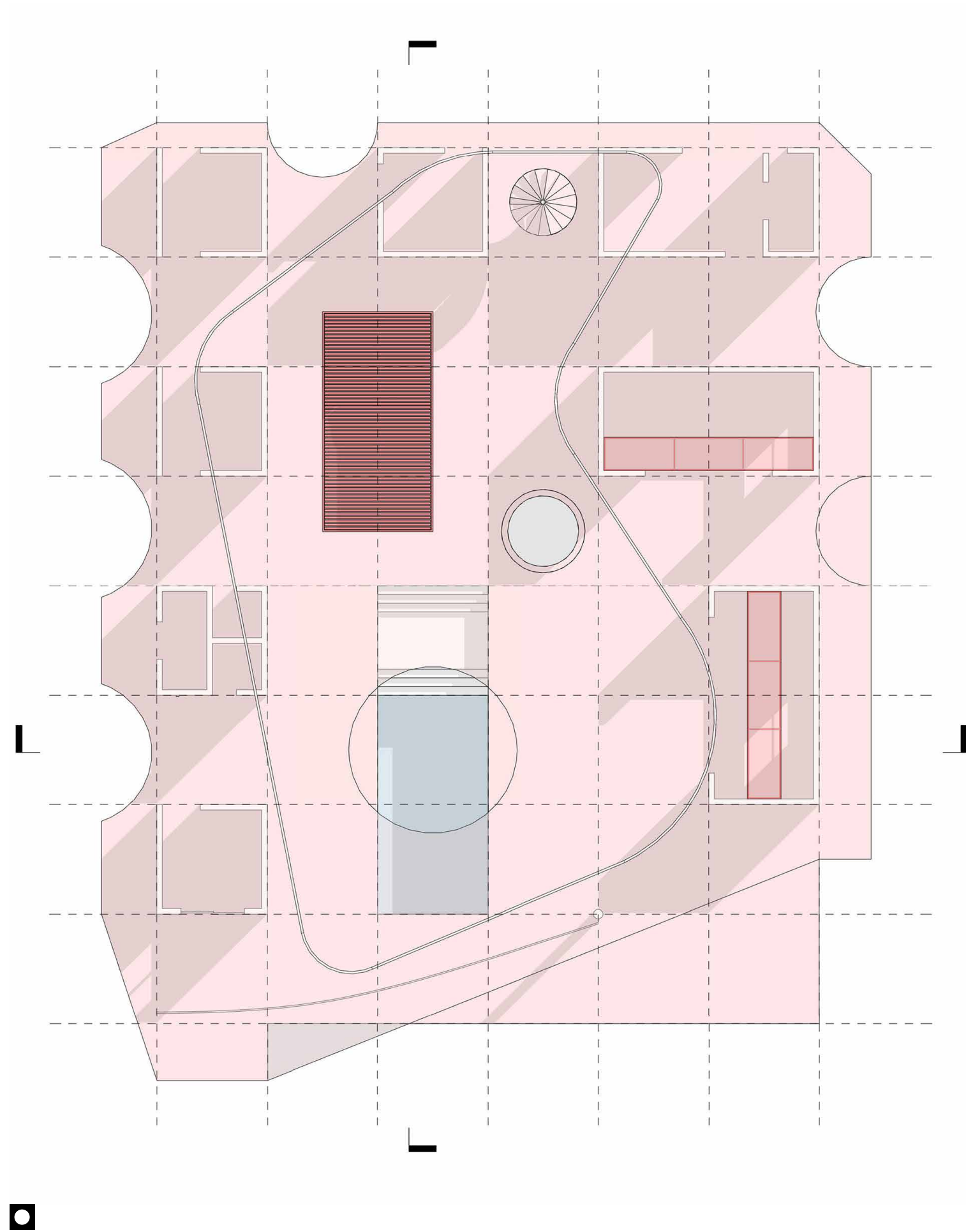
■ *Section Axo of 2 Bedrooms*



◀ *Long & Short Section*



A.05



▲ The top slab functions as an expansive roof space defined by a sculptural hand rail that cuts across the grid. Various punctures in the roof serve to enhance the program below. Along the edge of the slab circular sections are cut away to allow light into the grid.





A-05

